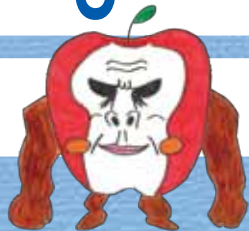


MAHS School Guide



Iwate Prefectural

Morioka Agricultural High School



The Principles of MAHS

Govern by yourselves and be cooperative

(Act independently with utmost consideration of others)

Simplicity and fortitude

(Integrity and courage)

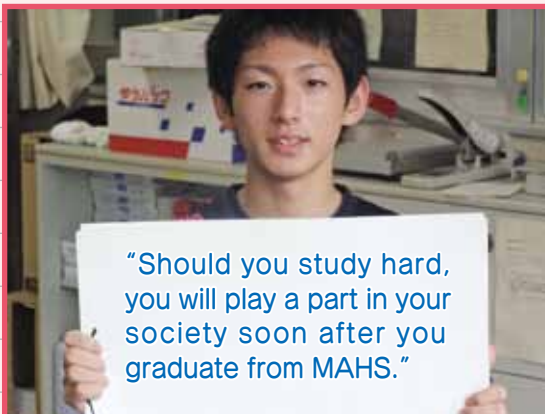
This is what you should aim for while you are a student at MAHS.

We are all one school.

We would like you not only to be a main member of a local district but also to support both Japan and the world in the future.

That is why we expect you to read the times as a major role in the 21th century and become a student with richness of spirit, acquiring agricultural knowledge and techniques as a specialist.

Specialties of MAHS



The History of MAHS



MAHS was founded in 1897. Many young people, who have carried the development of agriculture in Iwate, have graduated from MAHS. Blessed with the beautiful and tolerant natural surroundings of Mt Iwate, which always reminds us of its grandeur, and alongside the Kitakami river which is famous for its clear current.

MAHS has many Alumni, some of whom are active in politics, business, culture, and sports. Our graduates are not limited to only the field of agriculture.

MAHS has a long history. We have experienced the changes of the curriculum and the courses of study, but we always try to stay ahead of the times. MAHS will always be a school which offers you the future.

Since the schools opening over 136 years ago the pioneering spirit of Iwate has been passed down from student to student and is still alive in the hearts and minds of the current students at MAHS.

Facts about MAHS



MAHS is the oldest school in Iwate. It was founded in 1879, in the 12th year of the Meiji period of Japanese history. First founded as a Veterinary school and opened on the outskirts of Morioka city as part of a national policy to promote modern society. The opening of MAHS was thought of as symbol of modernization in Iwate.

The school campus of MAHS is the largest in Iwate. It is around 70 hectares. The campus contains a rice paddy field to the north of the school building and a forest near the suburbs of Morioka city.

Not only does MAHS have wonderful views of Mt. Iwate and Mt. Himekami but it is also close to national and prefectural research facilities, colleges and junior colleges.

The environment of MAHS is just what you have been looking for to immerse yourself in your studies.

The

Animal Science Course

“The Animal Science course will foster your passion to love and protect animals. You’ll be happy here!”



The goal of the Animal science course

The goal of the Animal science course is to train students to be farmers in the future and develop skills in working with animals. The course includes studying animal husbandry, rearing cattle, pigs, sheep and chickens. Students also have the option to study household pets such as cats, dogs and rabbits.

The Characteristics of the Animal Science Course

MAHS campus contains buildings for housing industrial animals and domestic animals; this includes a cattle stable and kennels for the dogs.

Students have the chance to study the animals that are closely connected to our lives, raising them from birth to breeding them; the students are involved in all aspects of the animals’ life.

In their 2nd year of study the students are divided into three groups, “Cattle Rearing”, “Domestic Animals” and “Pets”. The students will learn more technical knowledge and skills of their chosen field of study.

Some of the Animal Science Course students go on to study Zoology at Iwate National University, aiming to train as veterinarians. Some of the courses students go to Tokyo Agricultural University, technical colleges in Morioka or Iwate Prefectural Agricultural junior college. There are also some students whose goal will be employment in Iwate’s Agricultural industry. Or they may face the challenge of seeking employment in a large livestock farm situated in Hokkaido (Japan’s northernmost island).

The Animal Science Course ‘groups’, from the students

Cattle Rearing



“We focus our study on cattle and the skills involved with livestock Raising. You will have the chance to win first prize at the ‘cattle show’ or win the Cattle Competition at the local cattle market.”

Domestic Animals



“We primarily study pigs and sheep. We study how to improve the quality of the meat produce, and how to effectively make use of the raw sheep’s wool.”

Pets



“We study how to care for and rear canines. You can gain the certificate required for pet breeding management in the pet industry.”

The

B

“People grow life in the form of plants; it in turn grows the mind.
Watching them flourish is a kind of divine drama.”



Botanical Science Course

The Goal of the Botanical Science Course

The course teaches a wide range of knowledge, including the biology of farm products : rice, potatoes, flowers, vegetables, fruits, and the ways in which they are grown. The objective of this course is to train the students to become farmers or agricultural technicians for a new era. It is our goal for the students to understand the importance of agriculture for the future.

The Characteristics of the Botanical Science Course

MAHS campus contains about 8 hectares of rice field, 2 hectares of fruit orchards, 5 greenhouses, agricultural facilities and land where the students are able to grow vegetables and flowers. We are proud to own and maintain the largest area of school farmland in the Iwate prefecture.

Students on the Botanical Science Course learn how to grow crops, flowers, fruit and vegetables through various techniques and practices. What’s more the students sell the produce they grow. This is an important experience for the students as they learn the dynamics of agriculture; from the field to the consumer the students experience the whole process.

Post-graduation from MAHS the students’ career choices are varied. Some students will go to Universities outside of Iwate to continue studying agriculture, or go to technical colleges in Morioka or Iwate prefectural University. Others go on to a broad range of occupations. Our students find work not only in agricultural business (Japan Agricultural Co-operative, tractor sales etc.), but also in the service industry, manufacturing and office work.

The Botanical Science Course ‘groups’, from the students

Vegetable Studies



“We aim to grow tomatoes, leeks and napa cabbages (Chinese cabbages) of good quality. We study how to make fertile soil, the procedure for sowing seeds and keeping a seed bed. Vegetables grown at MAHS are sold in the school and at the school festival. There is wide appeal amongst the locals and we are sold out every year.”

Crop studies



“We grow rice plants and potatoes. We experience the whole process from the sowing to the harvest. The taste of fresh rice is especially good. We also make our potatoes into a delicious potato salad and then we enjoy eating it.”

Fruits and Orchard studies



“We grow apples, pears, grapes and peaches. Pupils from local primary schools and trainees from abroad come to observe our fruit farm. Please come and enjoy the mysteries and tastes of the fruit of our fruit farm!”

Floriculture studies



“We grow Cyclamens and Cinerarias and many other breeds of flower. We also study how to grow foliage plants. We learn a lot of skills and knowledge as a flower grower as we sow and care for the flowers ourselves. There is something that stirs the heart in the process of growing flowers. MAHS is also qualified to provide the examination for the certification in flower decoration.”

The

C

"In Japan we say itadakemasu which means 'eat the life of the food' before we eat. With this in mind, we process our food akin to the care and devotion a mother would give her child, as if the food were a life unto itself."



omprehensive Food Science Course

The goal of the Comprehensive Food Science Course

The students study the food processing techniques of farm produce and stockbreeding. The students study the technology and manufacturing techniques involved in processing the farmed raw materials into commercial products. The core course objective is to create an agricultural technician for the new era.

The Characteristics of the Comprehensive Food Science Course

The students study food from the various points of view. Production, processing, hygiene, safety measures, the distribution structure and sales are the main areas of study. MAHS has a large processing plant and laboratory where the students acquire further knowledge and skills of food processing. We are proud of the facilities. The school also offers an examination for the students to qualify as a nutritional advisor.

The Comprehensive Food Science Course 'groups', from the students

Processing farm products



The students study how to process flour for noodles and bread. They filter the flour to make delicious bread and noodles for noodle soup. Come and eat our food for yourself, our food will surely tempt your appetite!

Meat Processing and Dairy



"We are currently engaged in research to refine and create an original sausage and smoked food product. Please come and eat our food at the school festival. Our food will surely catch your appetite!"

Fermentation and Brewing



"We study the strength of microbes in ferment and the lactic acid bacteria in bagels and cheeses and we are studying the ways in which we can use their strength. Don't miss out on an opportunity to try our food."

Cooking and Nourishment



"We make allergy free food and confectionary products that still have rich taste but are low in fat, sugars and alcohol. We make our food from the milk, fruits and vegetables that MAHS produces. That's the point of our studies!"

"The students decide what they will study, they say their studies are a succession of failures and success."

The **D**

“It is in the form of consideration to reach out to others.
It is what defines us as human beings.”



Domestic and Human Science Course

The Goal of the Domestic and Human Science Course

Students study the changes of our bodies and minds; from birth, growth, development and ageing. The students learn to become people who will take care of us through agriculture, home economics and welfare.

The Characteristics of the Domestic and Human Science Course

The students' main focus of study is agriculture and welfare at home. The students will learn to be the people who will contribute to their local communities, working to support Japan with its growing issue of an ageing population and low birth rate. Whilst the students study, they will acquire abilities and the right attitude to work alongside the agricultural and the welfare industry. Students practice, learn and are mindful of their own health in order to inspire and care for others.

The Domestic and Human Science Course 'groups', from the students

Food and welfare studies



“We are studying meals for the elderly. We are researching the ease of which it is for the elderly to eat certain foods, focusing on the hardness of the food. We are trying to cook various kinds of food, making local dishes into suitable meals for the elderly in care homes. We are also currently studying snacks which are suitable for children.”

Child Care Studies



“We are studying how children develop through play and the growth of small children. We went to preschools and helped the members of staff there. We also planned the 'children's square' at the school festival and played together with the children. The school is qualified to provide the exam for grade 2 skills in childcare.”

Agricultural studies



“We have been trying to produce cosmetics and Bubble Baths that are made from the herbs we grow at the school. This year we are studying how to apply the various good effects of herbs to our daily lives.”

Welfare studies



“We volunteer to work collecting recyclable plastics and garbage, then we donate our earnings to Minori Home for the aged. We often go to nursing homes to talk and socialize with the elderly who are being cared for. We have even learnt sign language to talk with some of the hard of hearing occupants.”

Textiles



“In the second year we make shorts and blouses, the third year students make what they want to; like clothes for the concert, or a “furisode”—a traditional Japanese kimono for the young girls, and hooded sweatshirts. Our focus is to study the good points of handmade clothes.”

The **E**

“The earth sustains all life, and life should be protected.”



Environmental Science Course

The goal of the Environmental Science Course

The students study to be technicians on plant cultures, environmental protection, studies of forest and wooded areas, or studies for students who wish to become forest farmers. The students make use of their skills in biology, and develop their knowledge further to learn the true power of nature.

The Characteristics of the Environmental Science Course

The students learn biotechnology, artificially making use of the power of living things. We are proud of our laboratories in the campus forest, and the wide area of land for studies which is full of trees and forest plants. The students study a wide range of topics, from plants and animals to entire forests and even microorganisms. Every year students attend workshops for environmental protection held both in Japan and internationally. The attraction of this course of study is that the students study from a scientific and global point of view.

Post-graduation most students will go to university, some national and others private. Those students will likely major in Environmental Science and Agriculture. Others find employment as government officials working within Japan's forestry industry, and some will find their feet as office workers or in agriculture. Many expect to find work in the Morioka area.

The Environmental Science Course 'groups', from the students

Plants and Biotech studies



“We cultivate flowers and vegetables which will be of a benefit to society. Mainly we study by ourselves, but sometimes we will cooperate to do research. It is fun to get together and study as a team.”

Animals and microbes studies



“We are currently studying and breeding a particular species of chicken originally from the Tokai region of Japan. Previously extinct in Iwate we are reintroducing the 'Nagoya chicken' (from Tokai) to farming in northern Japan, with the cooperation of Iwate university.”

Forestry studies



“The focus of our study is the woods and the forest. We often study outside, so this group suits a person who likes the outdoors. In the winter we are given special training for working towards a career as a governmental officer.”

Forest culture studies



“We first study the environmental problems in our local prefecture, Iwate. We then continue to learn how we can use our knowledge to contribute to our local society. We are currently studying the extent of the salt damage from the tsunami caused by the Great East Japan Earthquake of 2011. We are studying the effects it has had on the environment and agriculture in the effected coastal areas.”

The location of MAHS

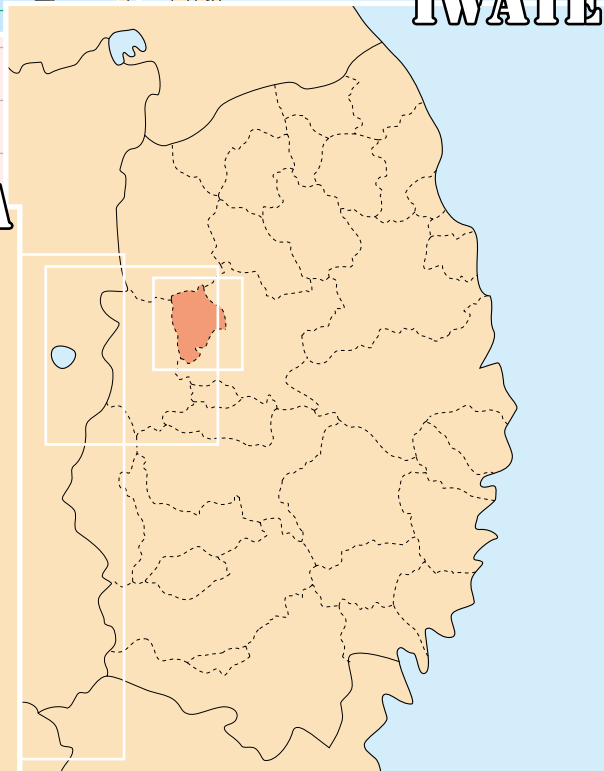
EAST ASIA



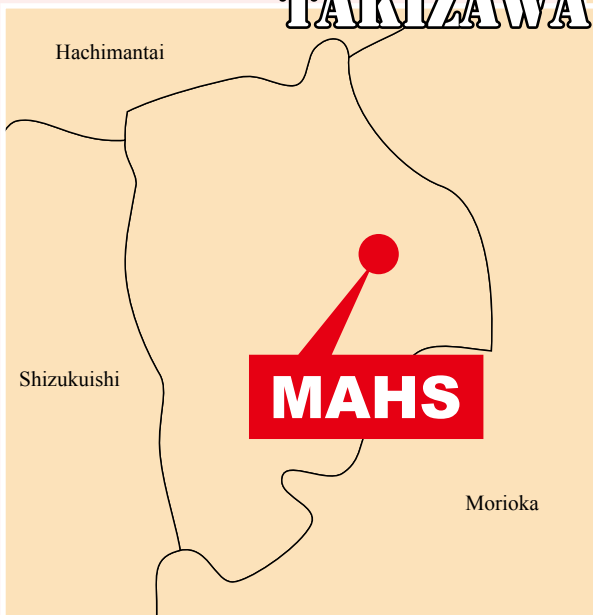
JAPAN

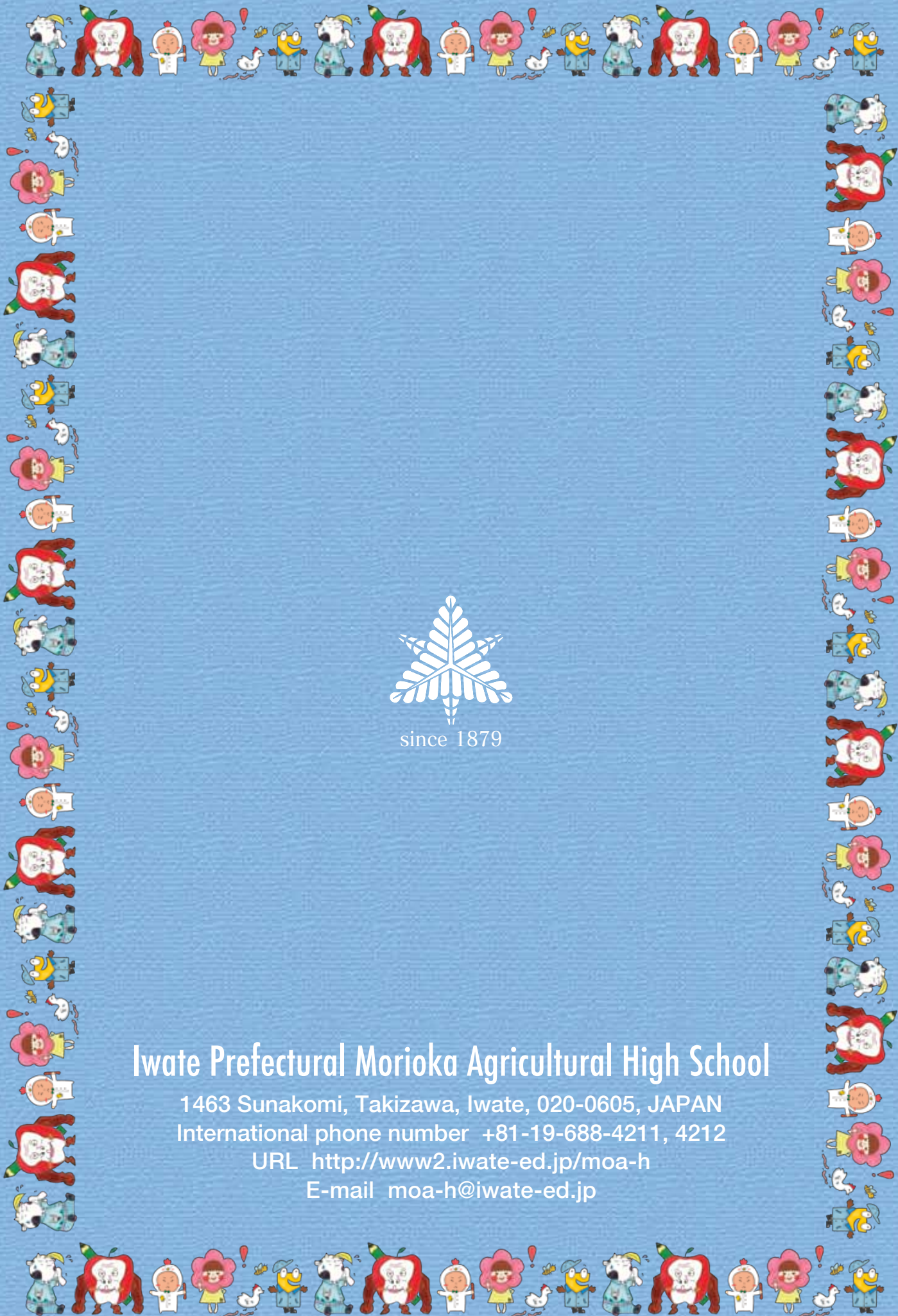


IWATE



TAKIZAWA





since 1879

Iwate Prefectural Morioka Agricultural High School

1463 Sunakomi, Takizawa, Iwate, 020-0605, JAPAN

International phone number +81-19-688-4211, 4212

URL <http://www2.iwate-ed.jp/moa-h>

E-mail moa-h@iwate-ed.jp